

THE RANGE

10kVA - 3350kVA



Diesel generating sets worldwide



**ENGINEERING EXCELLENCE
BUILT ON EXPERIENCE**

ENGINEERING EXCELLENCE

With more than forty years of expertise in the design and manufacture of diesel generating sets our management team ensures every AJ Power generating set will provide reliable power and peace of mind. Whether used daily or as an emergency, you can be assured our talented team has created a power solution with you and your needs in mind.

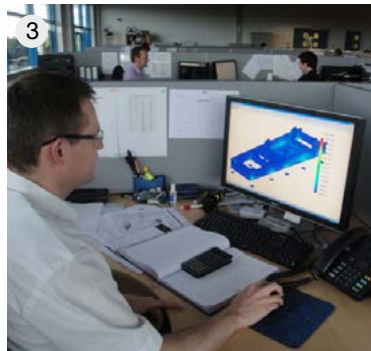
Each AJ Power generating set is manufactured at the company's modern facilities in Northern Ireland, which is part of the United Kingdom. Northern Ireland has a proud history in engineering that dates back over three hundred years. Pneumatic tyres, tractors, four-wheel drive systems, ejector seats, aeroplanes and ships are just some of the products that have been invented, designed or manufactured in Northern Ireland.

All our machines up to 7 Series are produced on powered automotive style assembly tracks by skilled operatives prior to load and functional testing in advanced test cells. The largest machines are assembled in a ultra modern high bay assembly hall with the most advanced testing facilities available for multiple units up to 4000kVA capacity (low or high voltage).

AJ Power is proud of its origins and strives to continue to bring superior products, manufactured in the United Kingdom, to world markets.

BUILT ON EXPERIENCE





1. Main office facilities at our factory in Northern Ireland. 2. Large stocks of engines and alternators are held on-site. 3. We employ the best graduates from Northern Ireland's universities. 4. Automated assembly track. 5 State-of-the-art large machine test cell within new large machine assembly hall.

ENGINES & ALTERNATORS



To ensure world-class quality our major components such as engines, alternators and steel are all produced or sourced in the United Kingdom, Europe, United States of America or Japan. Investment in class-leading technology and processes ensure that each AJ Power generating set meets and exceeds your expectations time after time.

We offer a range of engine choices and two alternator choices - Mecc Alte or Newage Stamford.

AGCO POWER

AGCO Power has made diesel engines at its plant in Nokia, Finland for nearly 60 years. The highly automated plant manufactures more than 60,000 diesel engines annually and is at the heart of many tractors and other farm machinery. It is also the engine of choice for a large number of other applications around the world.

MECC ALTE

Mecc Alte are a world leading producer and supplier of synchronous alternators. As a totally independent company they are focused totally on producing world class alternators.

MITSUBISHI

Mitsubishi industrial engines have a worldwide reputation for reliability, fuel economy and long life. Their long stroke and low compression reduce engine stress. Service friendly design reduces maintenance costs and shortens machine downtime.





MTU

Manufactured in Germany, MTU is one of the world's leading manufacturers of large diesel engines. The company has a history spanning 100 years and is repeatedly at the forefront of technological progress. With impressive load acceptance, low fuel consumption, low emissions and long service intervals, MTU make perfect engines for the largest of the AJ Power range.

NEWAGE STAMFORD

Manufactured in the UK and have nearly 100 years experience in building electrical machines on its main manufacturing site in Stamford, United Kingdom. Widely known throughout the world of power generation for reliability.

PERKINS

For over 80 years Perkins have worked with generator set manufacturers to bring light, warmth, protection and of course peace of mind to thousands of people.

SCANIA

The demand for prime power and standby power generation is constantly growing. In either case – wherever there is a critical need for dependable, class-leading fuel efficient workhorses that require a minimum of service and maintenance – the answer is Scania engines for power generation.

Choose your performance



3 SERIES

Power:
10kVA - 66kVA

Overview:
Our smallest range offering you desirable power in a compact package.

Sectors Served:
Telecommunications, Construction, Residential, Retail.



5 SERIES

Power:
33kVA - 275kVA

Overview:
Setting standards for others to follow. Two engine choices complete with full array of additional options.

Sectors Served:
Construction, Residential, Agriculture, Industrial, Commercial.

Perfect generating set



7 SERIES

Power:
275kVA - 710kVA

Overview:
A popular range including models to meet stringent emissions legislation.

Sectors Served:
Industrial, Construction,
Mining, Commercial,
Events, Utility.



9 SERIES

Power:
715kVA - 3350kVA

Overview:
Our largest generating set range, offering power you can depend on, when it counts.

Sectors Served:
Data Centres, Healthcare,
Commercial, Industrial,
Banking.

3 SERIES

10 - 66 kVA

The attention to detail and high standards of engineering can be seen immediately in the AJ Power 3 Series.

The smallest range from AJ Power, the 3 Series, offers reliable power in an ultra compact solution. The 3 Series is powered by the world renowned Perkins and Mitsubishi engines and offers optimum fuel consumption. A range of options are available to tailor your generating set to meet your needs, including optional canopy offering low noise level - perfect for urban locations.

Also available within the 3 Series range is our telecomms generating set, offering an impressive solution for the telecommunications market. Integral high capacity fuel tanks and 500 hour service intervals are just a few of the many features of this model, specifically chosen to serve its purpose.



Fuel Optimised

| Model | 50Hz | | | | 60Hz | | | |
|-------------|-------|------|---------|------|-------|------|---------|------|
| | Prime | | Standby | | Prime | | Standby | |
| | kVA | kW | kVA | kW | kVA | kW | kVA | kW |
| AJ10 | 9.0 | 7.2 | 10.0 | 8.0 | - | - | - | - |
| AJ14 | 13.0 | 10.4 | 14.3 | 11.4 | - | - | - | - |
| AJ17 | 14.3 | 11.4 | 15.7 | 12.6 | - | - | - | - |
| AJ22 | 20.0 | 16.0 | 22.0 | 17.6 | - | - | - | - |
| AJ33 | 30.0 | 24.0 | 33.0 | 26.4 | 33.8 | 27.0 | 37.5 | 30.0 |
| AJ50 | 45.0 | 36.0 | 50.0 | 40.0 | 56.3 | 45.0 | 62.5 | 50.0 |
| AJ66 | 60.0 | 48.0 | 66.0 | 52.8 | 67.5 | 54.0 | 75.0 | 60.0 |

Stage IIIA Emissions Compliant

| Model | 50Hz | | | | 60Hz | | | |
|-------------|-------|------|---------|------|-------|------|---------|------|
| | Prime | | Standby | | Prime | | Standby | |
| | kVA | kW | kVA | kW | kVA | kW | kVA | kW |
| AJ10 | 9.0 | 7.2 | 10.0 | 8.0 | 11.3 | 9.0 | 12.5 | 10.0 |
| AJ14 | 13.0 | 10.4 | 14.3 | 11.4 | 15.6 | 12.5 | 17.4 | 13.9 |
| AJ22 | 20.0 | 16.0 | 22.0 | 17.6 | 22.5 | 18.0 | 25.0 | 20.0 |

Ratings based on 3ph, 400/230 Volt, 0.8pf, 50 Hz
and 3 ph, 480/277 Volt, 0.8pf, 60 Hz

1 phase available - Refer to factory for further
information



More details: Full product specifications are available on request.

5 SERIES

33 - 275 kVA

The 5 Series range from AJ Power - Setting Standards for others to Follow.

The 5 Series from AJ Power delivers exceptional performance, reliability, durability and low operating costs.

All models within the range are available in both open and sound attenuated versions, complete with a full array of optional extras to match your requirements.

Powered by the class-leading AGCO Power and Perkins engines the 5 Series offers excellent fuel consumption and is well equipped to deal with even the most arduous of conditions.



Fuel Optimised

| Model | 50Hz | | | | 60Hz | | | |
|--------------|-------|-------|---------|-------|-------|-------|---------|-------|
| | Prime | | Standby | | Prime | | Standby | |
| | kVA | kW | kVA | kW | kVA | kW | kVA | kW |
| AJ33 | 30.0 | 24.0 | 33.0 | 26.4 | 33.8 | 27.0 | 37.5 | 30.0 |
| AJ50 | 45.0 | 36.0 | 50.0 | 40.0 | 56.3 | 45.0 | 62.5 | 50.0 |
| AJ55 | 50.0 | 40.0 | 55.0 | 44.0 | 60.0 | 48.0 | 66.3 | 53.0 |
| AJ66 | 60.0 | 48.0 | 66.0 | 52.8 | 70.0 | 56.0 | 77.5 | 62.0 |
| AJ88 | 80.0 | 64.0 | 88.0 | 70.4 | 95.0 | 76.0 | 105.0 | 84.0 |
| AJ110 | 100.0 | 80.0 | 110.0 | 88.0 | 118.8 | 95.0 | 131.3 | 105.0 |
| AJ138 | 125.0 | 100.0 | 138.0 | 110.4 | 135.0 | 108.0 | 150.0 | 120.0 |
| AJ154 | 140.0 | 112.0 | 154.0 | 123.2 | 156.3 | 125.0 | 172.5 | 138.0 |
| AJ165 | 150.0 | 120.0 | 165.0 | 132.0 | -- | -- | -- | -- |
| AJ175 | 160.0 | 128.0 | 175.0 | 140.0 | 187.5 | 150.0 | 206.3 | 165.0 |
| AJ200 | 180.0 | 144.0 | 200.0 | 160.0 | 206.3 | 165.0 | 227.5 | 182.0 |
| AJ220 | 200.0 | 160.0 | 220.0 | 176.0 | 203.8 | 163.0 | 225.0 | 180.0 |
| AJ275 | 250.0 | 200.0 | 275.0 | 220.0 | 243.8 | 195.0 | 268.8 | 215.0 |

5 SERIES

Stage IIIA Emissions Compliant

| Model | 50Hz | | | |
|--------------|-------|------|---------|------|
| | Prime | | Standby | |
| | kVA | kW | kVA | kW |
| AJ33 | 30.0 | 24.0 | 33.0 | 26.4 |
| AJ66 | 60.0 | 48.0 | 66.0 | 52.8 |
| AJ88 | 80.0 | 64.0 | 88.0 | 70.4 |
| AJ110 | 100.0 | 80.0 | 110.0 | 88.0 |

Ratings based on 3ph, 400/230 Volt, 0.8pf, 50 Hz
and 3 ph, 480/277 Volt, 0.8pf, 60 Hz



More details: Full product specifications are available on request.

7 SERIES

275 - 710 kVA

Building the best generating sets in the world is our aim - the 7 Series speaks louder than words.

From whatever angle you look at it, there is no denying the high standards and attention to detail that have been applied to the design of the entire 7 Series range.

Ready to meet the demands of your industry, the 7 Series boasts an array of standard features plus a complete range of additional options.

The 7 Series range is powered by Scania engines, with Perkins powering the largest models in the range. These engines offer high performance cooling systems, high uptime, low operational costs and long service intervals - delivering power you can depend on.



Fuel Optimised

| Model | 50Hz | | | | 60Hz | | | |
|--------------|-------|-------|---------|-------|-------|-------|---------|-------|
| | Prime | | Standby | | Prime | | Standby | |
| | kVA | kW | kVA | kW | kVA | kW | kVA | kW |
| AJ280 | 250.0 | 200.0 | 280.0 | 224.0 | 281.3 | 225.0 | 312.5 | 250.0 |
| AJ310 | 280.0 | 224.0 | 310.0 | 248.0 | 306.3 | 245.0 | 343.8 | 275.0 |
| AJ330 | 300.0 | 240.0 | 330.0 | 264.0 | 325.0 | 260.0 | 368.8 | 295.0 |
| AJ360 | 330.0 | 264.0 | 360.0 | 288.0 | 362.5 | 290.0 | 412.5 | 330.0 |
| AJ375 | 350.0 | 280.0 | 375.0 | 300.0 | 387.5 | 310.0 | 437.5 | 350.0 |
| AJ400 | 370.0 | 296.0 | 400.0 | 320.0 | 412.5 | 330.0 | 462.5 | 370.0 |
| AJ440 | 400.0 | 320.0 | 440.0 | 352.0 | 431.3 | 345.0 | 500.0 | 400.0 |
| AJ460 | 410.0 | 328.0 | 460.0 | 368.0 | 450.0 | 360.0 | 512.5 | 410.0 |
| AJ500 | 450.0 | 360.0 | 500.0 | 400.0 | 500.0 | 400.0 | 556.3 | 445.0 |
| AJ550 | 500.0 | 400.0 | 550.0 | 440.0 | -- | -- | -- | -- |
| AJ600 | 550.0 | 440.0 | 600.0 | 480.0 | 537.5 | 430.0 | 593.8 | 475.0 |
| AJ660 | 600.0 | 480.0 | 660.0 | 528.0 | 650.0 | 520.0 | 718.8 | 575.0 |
| AJ710 | 650.0 | 520.0 | 710.0 | 568.0 | 712.5 | 570.0 | 781.3 | 625.0 |

7 SERIES

Stage IIIA Emissions Compliant

| Model | 50Hz | |
|--------------|-------|-------|
| | Prime | |
| | kVA | kW |
| AJ280 | 250.0 | 200.0 |
| AJ310 | 280.0 | 224.0 |
| AJ330 | 300.0 | 240.0 |
| AJ360 | 330.0 | 264.0 |
| AJ375 | 350.0 | 280.0 |
| AJ400 | 370.0 | 296.0 |
| AJ440 | 400.0 | 320.0 |
| AJ460 | 410.0 | 328.0 |
| AJ550 | 500.0 | 400.0 |
| AJ600 | 550.0 | 440.0 |



Ratings based on 3ph, 400/230 Volt, 0.8pf, 50 Hz
and 3 ph, 480/277 Volt, 0.8pf, 60 Hz

More details: Full product specifications are available on request.

9 SERIES

715 - 3350 kVA

Years of expertise are poured into every 9 Series generating set to deliver power solutions you can rely on.

The 9 Series is the largest power range from AJ Power. Whether it be low or high voltage (3.3-13.8kV), our engineer's can come up with a solution.

The 9 Series comes in open set versions, in canopy (MTU up to AJ1100 only) or can be supplied with bespoke containers.

A wide range of technical additional options are available on these generating sets to ensure the ultimate solution.

Offering a choice of MTU, Perkins or Mitsubishi engines, the 9 Series can meet the demands of all your critical power requirements.



| Model | 50Hz | | | | 60Hz | | | |
|---------------|--------|--------|---------|--------|--------|--------|---------|--------|
| | Prime | | Standby | | Prime | | Standby | |
| | kVA | kW | kVA | kW | kVA | kW | kVA | kW |
| AJ715 | 650.0 | 520.0 | 715.0 | 572.0 | 787.5 | 630.0 | 875.0 | 700.0 |
| AJ800 | 730.0 | 584.0 | 800.0 | 640.0 | 750.0 | 600.0 | 825.0 | 660.0 |
| AJ860 | 800.0 | 640.0 | 860.0 | 688.0 | 906.3 | 725.0 | 1000.0 | 800.0 |
| AJ880 | 800.0 | 640.0 | 880.0 | 704.0 | 843.8 | 675.0 | 931.3 | 745.0 |
| AJ900 | 800.0 | 640.0 | 900.0 | 720.0 | 856.3 | 685.0 | 950.0 | 760.0 |
| AJ1000 | 910.0 | 728.0 | 1000.0 | 800.0 | 887.5 | 710.0 | 975.0 | 780.0 |
| AJ1100 | 1000.0 | 800.0 | 1100.0 | 880.0 | 1000.0 | 800.0 | 1100.0 | 880.0 |
| AJ1220 | 1125.0 | 900.0 | 1220.0 | 976.0 | RTF | RTF | RTF | RTF |
| AJ1250 | 1125.0 | 900.0 | 1250.0 | 1000.0 | 1350.0 | 1080.0 | 1500.0 | 1200.0 |
| AJ1400 | 1275.0 | 1020.0 | 1400.0 | 1120.0 | 1312.5 | 1050.0 | 1450.0 | 1160.0 |
| AJ1500 | 1350.0 | 1080.0 | 1500.0 | 1200.0 | 1350.0 | 1080.0 | 1500.0 | 1200.0 |
| AJ1525 | 1400.0 | 1120.0 | 1525.0 | 1220.0 | RTF | RTF | RTF | RTF |
| AJ1650 | 1500.0 | 1200.0 | 1650.0 | 1320.0 | 1500.0 | 1200.0 | 1675.0 | 1340.0 |
| AJ1710 | 1540.0 | 1232.0 | 1710.0 | 1368.0 | - | - | - | - |
| AJ1770 | 1650.0 | 1320.0 | 1770.0 | 1416.0 | 1750.0 | 1400.0 | 2000.0 | 1600.0 |
| AJ1900 | 1725.0 | 1380.0 | 1900.0 | 1520.0 | 1725.0 | 1380.0 | 1900.0 | 1520.0 |
| AJ2035 | 1850.0 | 1480.0 | 2035.0 | 1628.0 | 1850.0 | 1480.0 | 2000.0 | 1600.0 |
| AJ2090 | 1915.0 | 1532.0 | 2090.0 | 1672.0 | 2062.5 | 1650.0 | 2250.0 | 1800.0 |
| AJ2230 | 2025.0 | 1620.0 | 2230.0 | 1784.0 | - | - | - | - |
| AJ2250 | 2080.0 | 1664.0 | 2250.0 | 1800.0 | 2375.0 | 1900.0 | 2625.0 | 2100.0 |
| AJ2260 | 2020.0 | 1616.0 | 2260.0 | 1808.0 | - | - | - | - |
| AJ2275 | 2085.0 | 1668.0 | 2275.0 | 1820.0 | - | - | - | - |
| AJ2360 | 2200.0 | 1760.0 | 2360.0 | 1888.0 | RTF | RTF | RTF | RTF |
| AJ2530 | 2300.0 | 1840.0 | 2530.0 | 2024.0 | - | - | - | - |
| AJ2550 | 2300.0 | 1840.0 | 2550.0 | 2040.0 | 2625.0 | 2100.0 | 2875.0 | 2300.0 |
| AJ2835 | 2575.0 | 2060.0 | 2835.0 | 2268.0 | RTF | RTF | RTF | RTF |
| AJ3070 | 2790.0 | 2232.0 | 3070.0 | 2456.0 | 2906.3 | 2325.0 | 3187.5 | 2550.0 |
| AJ3125 | 2840.0 | 2272.0 | 3125.0 | 2500.0 | 3125.0 | 2500.0 | 3500.0 | 2800.0 |
| AJ3260 | 3025.0 | 2420.0 | 3260.0 | 2608.0 | RTF | RTF | RTF | RTF |
| AJ3350 | 3025.0 | 2420.0 | 3350.0 | 2680.0 | 3500.0 | 2800.0 | 4000.0 | 3200.0 |

Ratings based on 3ph, 400/230 Volt, 0.8pf, 50 Hz
and 3 ph, 480/277 Volt, 0.8pf, 60 Hz.
Ratings may vary with engine / alternator choice.

- Not Available
RTF Refer to Factory for Ratings

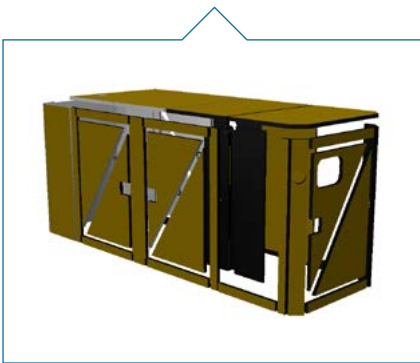


More details: Full product specifications are available on request.

SOUND ATTENUATED ENCLOSURES

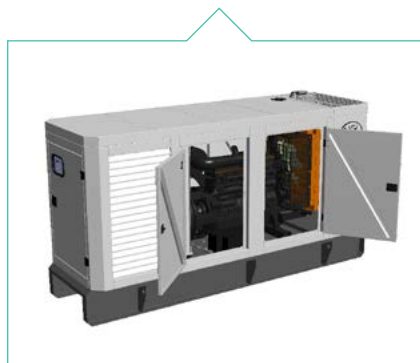
AJ Power's weather protective and sound attenuated enclosures deliver durability and security for your generating set. Manufactured of pre-treated galvanised steel and coated with polyester powder coated paint, the canopies are designed with low velocity airflow to prevent the ingress of water, sand and dirt. This is extremely advantageous to the operational life of the engine and alternator and will ensure your AJ Power sound attenuated generating set will operate in even the harshest conditions.

Also available are bespoke containers for the entire range of AJ Power generating sets.



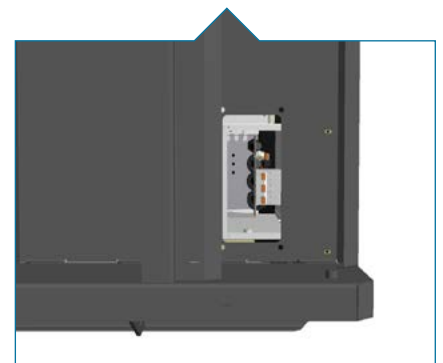
NOISE ABSORBENT MATERIALS

Enclosure is fully lined with noise absorbent material, as standard, to ensure low noise levels.



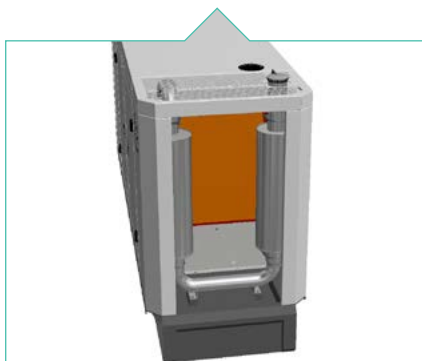
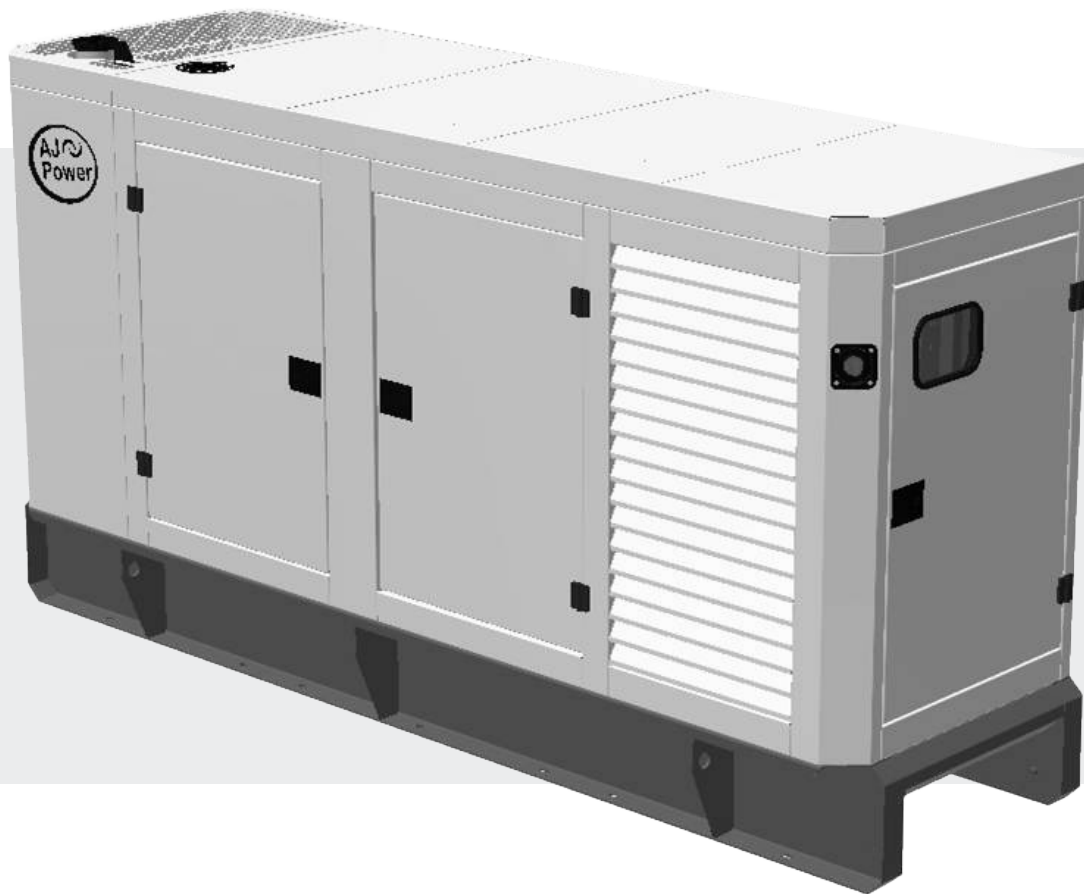
SERVICING MADE EASY

Large hinged doors provide access to all necessary components during installation and servicing. Lift-off hinges also available.



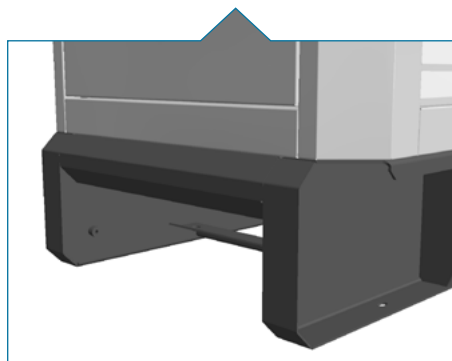
CONVENIENT CABLE ACCESS

Large aperture cable gland plate positioned below circuit breaker for ease of cable installation.



INTERNAL EXHAUST SILENCER SYSTEM

The exhaust silencer system is safely enclosed in the outlet of the enclosure.



INNOVATIVE DESIGN

At each stage of the design process each decision is evaluated to ensure a machine has low noise levels, high ambient clearance, low intake velocity whilst having a compact modern style.



CORROSION & DAMAGE RESISTANT

Fully galvanised steel enclosure coated in highly durable polyester powder paint.

DIGITAL CONTROL SYSTEMS





Operation made easy using the most up-to-date control systems.

AJ Power can provide a control system to meet all your needs. The modern range of digital control systems offers flexibility for the user, ease of use and optimises the performance of your generating set.

InSight3000 - manual, remote start.

InSight3200 - manual, remote start, liquid crystal display, full instrumentation and optional remote monitoring.

InSight3250 - enhanced InSight3200 model, complete with a host of extra features.

InSight4000 - full automatic mains failure supervision capability, optional remote monitoring.

InSight6000 - automatic synchronisation of up to 32 units with load management features.

ATSc - automatic transfer switch controller to provide automatic control of your standby generating set in the event of a power outage.

Remote Communications Solutions

Remote communications options are available with all AJ Power digital control systems (excluding InSight3000). Remote communication can give many advantages including reducing the need for site visits, minimising downtime, prioritising maintenance and alarm notification.

More details:

Full product specifications are available on request.

Specifications

| | |
|-----|-------------------------------|
| ● | Standard |
| ○ | Optional |
| - | Not available/ Not applicable |
| RTF | Refer to Factory |

Our range of generating sets are packed with standard features including robust base frame, low lube oil pressure shutdown, over speed protection, high coolant temperature shutdown, low battery voltage alarm, battery charging system failure, industrial silencer (optional extra on 9 Series), 3 pole suitably rated circuit breaker (optional extra on 9 Series), fuel tank level gauge, emergency stop push button, base fuel tank (not applicable to 9 Series). Also available is a complete array of optional extras to ensure your AJ Power generating sets meet your needs entirely.

| | 3 Series | 5 Series | 7 Series | 9 Series |
|--|----------|----------|----------|----------|
| Control System | | | | |
| InSight3000 | ● | ● | - | - |
| InSight3200 | ○ | ○ | ● | ● |
| InSight3250 | ○ | ○ | ○ | ○ |
| InSight4000 | ○ | ○ | ○ | ○ |
| InSight6000 | - | ○ | ○ | ○ |
| Control panel heater | - | ○ | ○ | ○ |
| Programming Kit (3200/3250/4000) | ○ | ○ | ○ | ○ |
| G59 / G10 main protection relay | - | ○ | ○ | ○ |
| Remote display panel (3200/3250/4000/6000) | ○ | ○ | ○ | ○ |
| Protection alarms (various) | ○ | ○ | ○ | ○ |
| Communications | | | | |
| Volt free contacts | ○ | ○ | ○ | ○ |
| GSM modem kit | | | | |
| Remote communications solution | ○ | ○ | ○ | ○ |
| Automatic load transfer panels | | | | |
| ATS (40 Amp - 4000 Amp) | ○ | ○ | ○ | ○ |
| Sound attenuated enclosure | ○ | ○ | ○ | ○ |
| Engine | | | | |
| Electronic governor | - | ○ | ● | ● |
| Coolant drain | - | - | ● | ● |
| Coolant heater | ○ | ○ | ○ | ○ |
| Lube oil drain (standard on canopied sets) | ○ | ○ | ● | ● |
| Lube oil drain pump | ○ | ○ | ○ | ○ |
| Approaching low lube oil pressure alarm | ○ | ○ | ○ | - |
| High lube oil temperature shutdown | - | - | - | ○ |
| Alternator | | | | |
| Anti- condensation heater | ○ | ○ | ○ | ○ |
| Permanent magnet generator (PMG) | - | ○ | ○ | ○ |
| Programming interface kit | ○ | ○ | ○ | ○ |
| Radio frequency interference suppression kit (RFI) | ● | ● | ● | ● |
| Upgrade AVR from 1-phase to 3-phase sensing | - | ○ | ○ | ○ |
| Ultra low harmonics kit | ○ | ○ | - | - |
| Total plus winding protection | ○ | ○ | ○ | ○ |
| Upgrade from IP21 to IP23 protection | ● | ○ | ○ | - |

Please Note: Some options dependant on open/ canopied generating set and are model dependant.

| | 3 Series | 5 Series | 7 Series | 9 Series |
|--|----------------|----------|----------|----------|
| Radiator | | | | |
| Transition mounting flange* | - | ○ | ○ | ○ |
| Flexible transition duct* | - | ○ | ○ | ○ |
| Sound attenuator* | - | ○ | ○ | ○ |
| Weather louvre* | - | ○ | ○ | ○ |
| * open sets only | | | | |
| Standard coolant solution (30% antifreeze) | ● | ● | ● | ● |
| Low ambient coolant solution (50% antifreeze) | ○ | ○ | ○ | ○ |
| Low coolant temperature alarm | - | - | ○ | ○ |
| Approaching high coolant temperature alarm | ○ | ○ | ○ | ○ |
| Low coolant level alarm | - | ○ | ○ | ○ |
| Baseframe / Handling | | | | |
| Bunded fuel base tank | ○ | ○ | ○ | RTF |
| Bunded base tank with leak detection | - | ○ | ○ | RTF |
| Integral single skinned tank (600, 1000, 1300 litres - canopied sets only) | ○ | - | - | - |
| Extended bunded metal base tank | - | ○ | - | - |
| Single point lift (canopied sets only) | ○ | ○ | ○ | - |
| Captive anti-vibration mounts (required for trailer sets) | ○ | ○ | ○ | - |
| Fuel | | | | |
| Base tank | ● (100 litres) | ● | ● | RTF |
| Fuel tank level gauge | ● | - | - | RTF |
| Fire valve kit | - | ○ | ○ | RTF |
| Low fuel level alarm | ○ | ○ | ○ | RTF |
| Analogue fuel level measurement | ○ | ○ | ○ | RTF |
| 4 Position fuel level switch | ○ | ○ | ○ | RTF |
| 3 Way dual valve with single lever operation | ○ | ○ | ○ | RTF |
| Manual fuel transfer pump & hose | - | ○ | ○ | RTF |
| Automatic fuel transfer system | - | ○ | ○ | RTF |
| Exhaust | | | | |
| Industrial silencer mounting kit | ○ | ○ | ○ | ○ |
| Residential silencer (loose) standard on canopy sets | ○ | ○ | ○ | ○ |
| Residential silencer mounting kit | ○ | ○ | ○ | ○ |
| Stainless steel bellows (standard on canopy sets) | ○ | ○ | ● | ○ |
| AC Power Out (3 Phase) | | | | |
| Upgrade to 4 pole circuit breaker | ○ | ○ | ○ | ○ |
| Auxiliary contact in circuit breaker | ○ | ○ | ○ | ○ |
| 16A/32A/63A CEE Form Socket - 50Hz only | RTF | RTF | RTF | - |
| Motorised kit for circuit breaker | - | ○ | ○ | ○ |
| Earth leakage protection for main circuit breaker | ○ | ○ | ○ | ○ |
| Battery | | | | |
| Battery isolator switch | ○ | ○ | ○ | ○ |
| Static battery charger incl. BC failure | ○ | ○ | ○ | ○ |
| Static battery charger incl. BC failure & boost | ○ | ○ | ○ | ○ |
| Other Accessories | | | | |
| Road Trailer (canopied sets only) | ○ | ○ | - | - |
| Sound attenuated container | ○ | ○ | ○ | ○ |
| Tool kit | ○ | ○ | ○ | ○ |
| Packing case (open set) | ○ | ○ | - | - |
| CE certification | ○ | ○ | ○ | ○ |
| Additional operators manual | ○ | ○ | ○ | ○ |

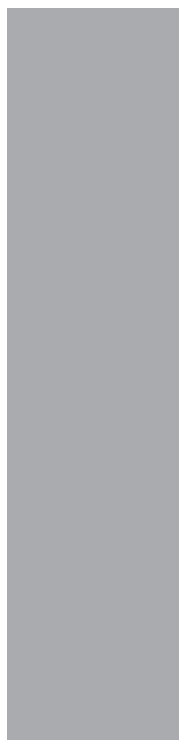
Support. When you need it.

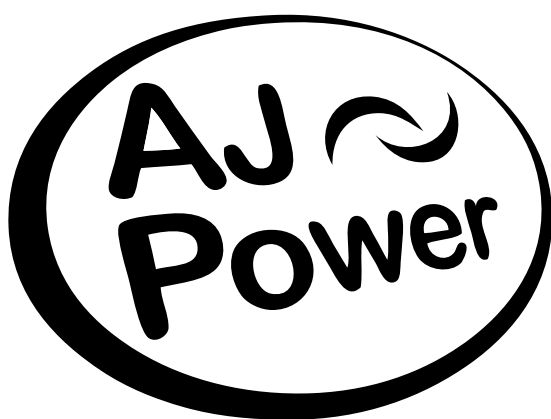


AJ Power and our extensive network of distributors are committed to finding the right product for you and then supporting you with the best service, parts, training and commissioning, when you need it. We are always ready to go the extra mile to support your purchase.

We can offer tailored generating set training courses from basic to advanced level. These are available on location or at the modern AJ Power training suite at the factory in Northern Ireland.

One of the key criteria for all our customers is the availability of parts. We recognise this and invest resources in making sure the correct parts are available in the quickest time. We also spend time training our distributors and their engineers to ensure they fully understand your parts requirements. We are committed to keeping your machines running.





DIESEL GENERATING SETS WORLDWIDE

AJ Power Limited
1 Charlestown Drive
Craigavon
BT63 5GA
Northern Ireland
United Kingdom
Telephone +44 (0) 28 3836 1000
Fax +44 (0) 28 3836 1010

www.ajpower.net

Every effort has been made to ensure that the information in this publication is as accurate and current as possible. However, inaccuracies, errors or omissions may occur and details of the specifications may be changed at any time without notice.

Publication No. B001RevC/05/15_EN
© AJ Power Limited 2014

LOCAL DISTRIBUTION PARTNER

